



Introduction to PCMS Engineering

Overview

PCMS Engineering provide advanced Maintenance solutions for industry, particularly for those companies that operate within a secure, sensitive or potentially hazardous environment. With over 30 years relevant industry experience, PCMS specialists can design and undertake selected maintenance tasks and initiatives or support comprehensive maintenance programmes.

'Intelligent Maintenance' lies at the heart of our business philosophy. We utilise a wide range of analysis tools, monitoring techniques and technologies that have been proven in use across industry. Based on our experience from a wide variety of operational environments, we offer a full review of existing maintenance capability/regimes, and design bespoke solutions to engineering problems. We recognise that all maintenance solutions within modern industry must be cost justified against a robust business case and can be demonstrated to provide secure and tangible benefits.



Our business approach is to work with you to develop a satisfactory solution in line with your requirements. Working in close association with engineering and relevant operational personnel and, after in-depth analysis of relevant data, we outline recommendations regarding possible reliability improvement initiatives or appropriate changes to the maintenance or operational regime.

PCMS Engineering was established in 2003 and has grown rapidly to become one of the UK's most respected provider of CBM services. The Company were 2008 winners of a prestigious Business Achievement award for Maintenance Innovation and declared by global process automation leaders, Emerson, as their top European Distributor for monitoring equipment in 2009 and 2010.

Recent major contract awards include an equipment supply, installation and monitoring contract for Gulf Offshore's fleet of platform supply vessels and a four year agreement for the provision of new Maintenance management and Asset management capability for Sellafield Ltd in support of their high profile executive sponsored MRP programme.





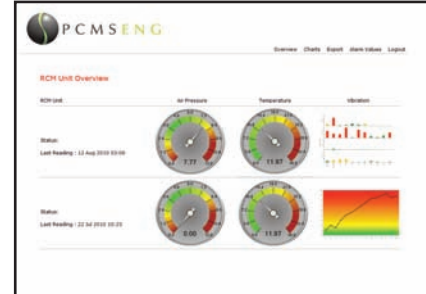
Products and Services

Our comprehensive range of services include:

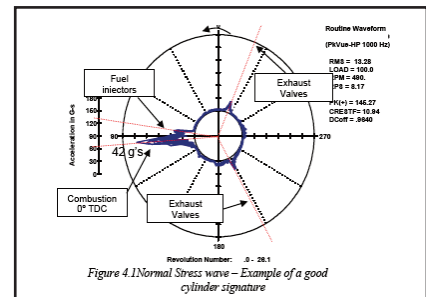
- QA Testing
- Managed Oil Analysis
- Solutions Engineering
- Strategic Maintenance Reviews
- Work Management Programmes
- Reliability Improvement Programmes
- Web-based CBM Data Management
- Condition Monitoring - On-site or Remote
- Condition Assessment of Components & Systems

In support of our core services, we design, develop and implement appropriate added value software and management reporting systems, with bespoke elements designed to meet the needs of our key clients. These systems range from basic spreadsheet handling and exception reporting through to more complex storage, analysis, retrieval and predictive management programs, such as our web-based Oil Management software system (OMEGA).

In addition we supply, commission, support, repair and recalibrate a wide range of Condition Monitoring equipment. We are distributors for Emerson's range of Machinery Health products.



Web-Based Asset Management



Polar Plot



QA Testing





Tools, Technologies and Applications

Technical Services

PCMS technical support capability is focussed around a range of services that aim to increase the all-round performance of equipment, components and systems. Supporting both modern and older plant and machines of any manufacturer, we offer Technical services based on the direct industry experience and know-how of our specialist engineers. These services include:- Consultancy on optimal asset utilisation, Training, Organising Technical Workshops, Documentation Support, Help-desk, as well as short or long term CBM support contracts and Reliability Improvement Programmes.

Managed Oil Analysis

PCMS provide a managed oil-analysis service to a wide range of industrial sectors. As part of this service, oil or grease samples are processed through a dedicated laboratory. Detailed results and recommendations based on chemical analysis and our engineering experience are fed back to clients as well as trending and exception reports. Samples that exceed client-specified alarm or critical status are immediately alerted to nominated users. Our team of specialists will work alongside your managers and engineers to recommend the appropriate level of analysis, agree the most appropriate reports, clarify relevant procedures and provide on-site training for operators. All sample data is stored in our secure web-based data centre and multi-user access provided via our **OMEGA** platform.

CBM Web-based Data Management

In support of our Managed Oil Analysis and Remote monitoring services, we have developed **OMEGA**, our own web-based monitoring platform. **OMEGA** (On-line, Monitoring, Evaluation and Graphical Analysis), enables multiple-user access to results and data stored in our secure data-centre, providing predictive analysis and flexible management information to organisations of all sizes.





CBM Services

Condition based Maintenance (CBM) techniques provide the reasoning and confidence to allow components to be 'changed on condition' rather than periodically and can underpin significant cost savings. In support of its plant and equipment reliability improvement initiatives, PCMS has developed a specific approach based on its expertise with a range of specialist technologies in the field of CBM, such as stress-wave analysis, ultrasonics, thermographic surveys and vibration monitoring. Many projects utilising these tools and techniques have been successfully undertaken including pinpointing component failures within underground tunnelling machines, ship's gearboxes and traction motors on railway rolling stock.

Our methodology is highly collaborative and projects usually start with a preliminary audit and CBM survey undertaken in conjunction with client engineering and operational personnel. Reports and recommendations, identifying the likely causes of low reliability, the key assets to be monitored and the most appropriate technique(s) to be employed, are submitted and discussed with management. After agreement, implementation is usually undertaken in two phases. The first phase focuses on the reduction in number of in-service failures and the second phase orientated to longer term actions to reduce (ppm) maintenance interventions and extend or rebalance maintenance and overhaul periodicities.

Work Management

Based on their long experience of working in the nuclear industry at Sellafield, PCMS specialists have developed a Work Management process which has demonstrated to the regulatory bodies that work activity is being undertaken in accordance with safe, controlled and measured processes. The philosophy and practice of Work Management is of relevance to any progressive organisation that understands that many of the costs and delays incurred within their operational areas are the direct consequence of their staff struggling with inefficient, misaligned and outdated processes and procedures.

References

Our reputation is based on providing cost-effective solutions to UK and overseas customers within the Nuclear, Rail, Mining, Shipping, Pharmaceutical and Refrigeration industry sectors. We are proud of our success in supporting such major organisations as Alstom Transport, Amey-Colas, Amtrak, Angel Trains, Atkins Nuclear, BNSF, Bombardier Transportation, British Gypsum, British Nuclear Group, E.C. Harris, First Scot Rail, James Fisher, Johnson Controls, Joy Mining, Gulf Offshore, MOD, National Express, New Jersey Transit, Pfizer, Salt Union, Tencel, UKAEA and UK Coal.

PCMS Engineering is a trading name of Practice Care Maintenance Services Ltd.
Company Registration Number 04939870, VAT Registration Number 625 3738 34.

